



3 Moth Close EDMONTON, QLD

 4  2  1

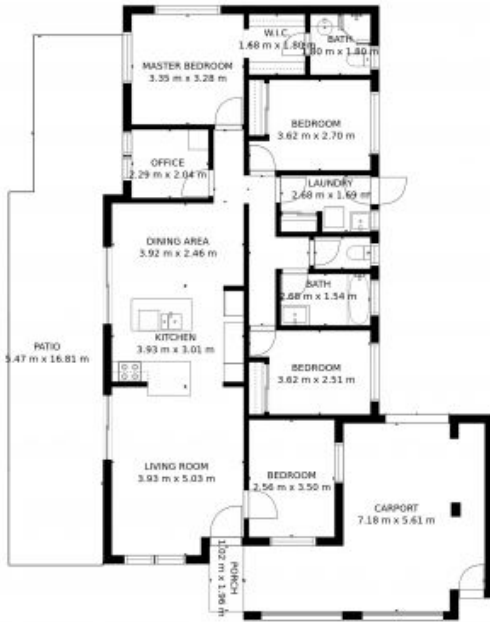
Your Own Retreat!

Nestled in a quiet cul-de-sac, this family home ticks all the boxes. Sat on an impressive 700m2 block, boasting four bedrooms and a study, a stunning pool, multiple outdoor entertaining areas, side access, and a beautifully landscaped tropical backdrop - this is FNQ living at its finest! After undergoing a full refresh, including the addition of a contemporary centre-point kitchen, there's nothing to do but move in and simply enjoy your new lifestyle!

- Open plan layout with great ventilation & lots of natural light to give an inviting, spacious feel
- Master bedroom features split-system air-conditioning, a walk-in robe with a light & bright en-suite
- Tiled throughout, keeping things cool all year round
- Rainwater tank with pump

Sam Holt
0432073212

Nickoli Obersky
0428338828



FLOOR PLAN

Plan is not to scale and is indicative of space. It is for illustrative purposes only. All room sizes and dimensions shown on this plan, including, but not limited to, walls, windows, cabinets are approximate. Property Sizes Australia gives no guarantee in the accuracy of the document.



SITE PLAN

3 Moth Close, Edmonton

