



1/5-7 Hamelin Street BENTLEY PARK, QLD



4



2



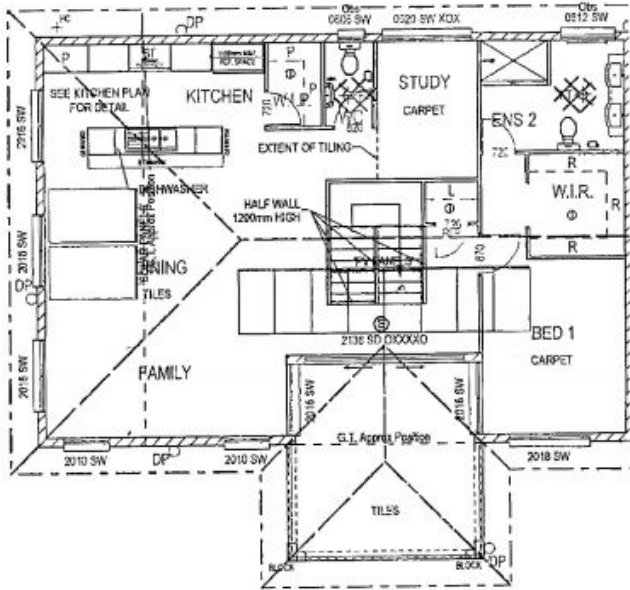
2

LARGE 4 BEDROOM 2 BATHROOM HOME + OFFICE -DUPLEX

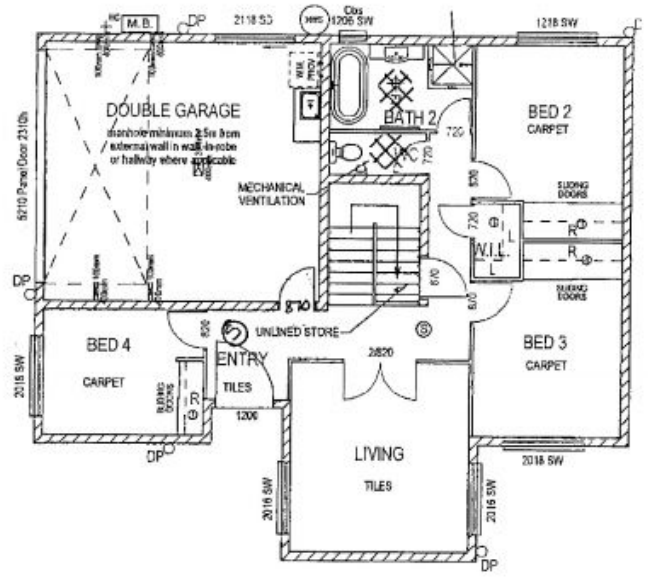
- Generous modern layout includes open plan living/dining area with large Balcony Patio
- State-of-the-art gourmet island kitchen with Caesar stone bench tops, stainless gas cook-top, soft closing draws, walk in pantry and cupboards
- Master bedroom with walk in robe and his and her vanity to top floor
- Split system air conditioning to living areas and bedrooms
- Three bedrooms to the ground floor with mirrored built in wardrobes
- Plus Media room, living room and study
- Blinds to the windows
- Low maintenance garden fully fenced.
- Double remote control panel lift garage door.
- Fenced front yard

Cathy Obersky

0412962546



Upstairs



Downstairs

